

St John Fisher Catholic Primary School

New Classroom & Amenities Building



New Classroom & Amenities Building
St John Fisher Catholic Primary School



New Classroom & Amenities Building
St John Fisher Catholic Primary School



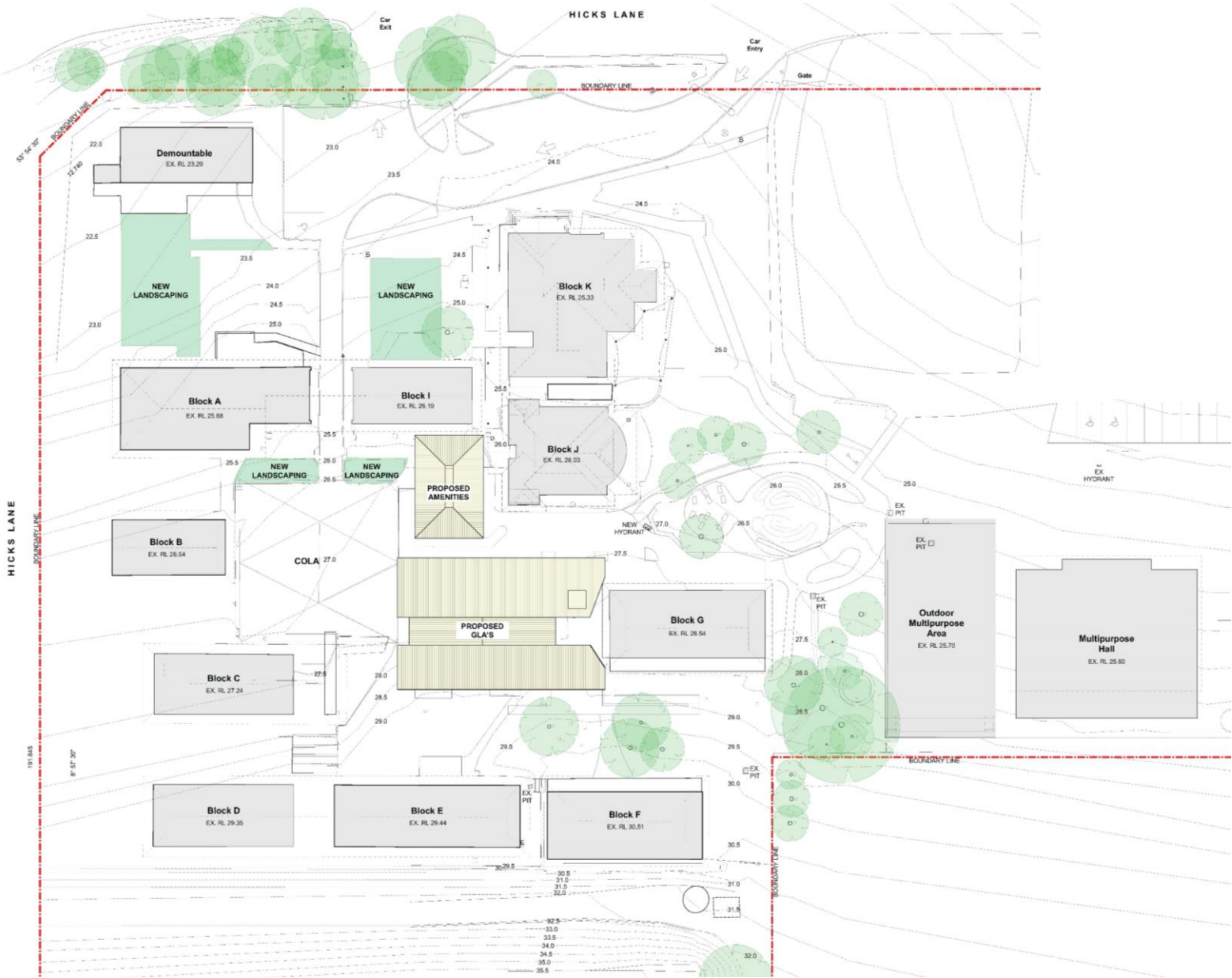
Gardner Wetherill & Associates
Nominated Architect - Toby Wetherill Reg No 8466

St John Fisher Catholic Primary School

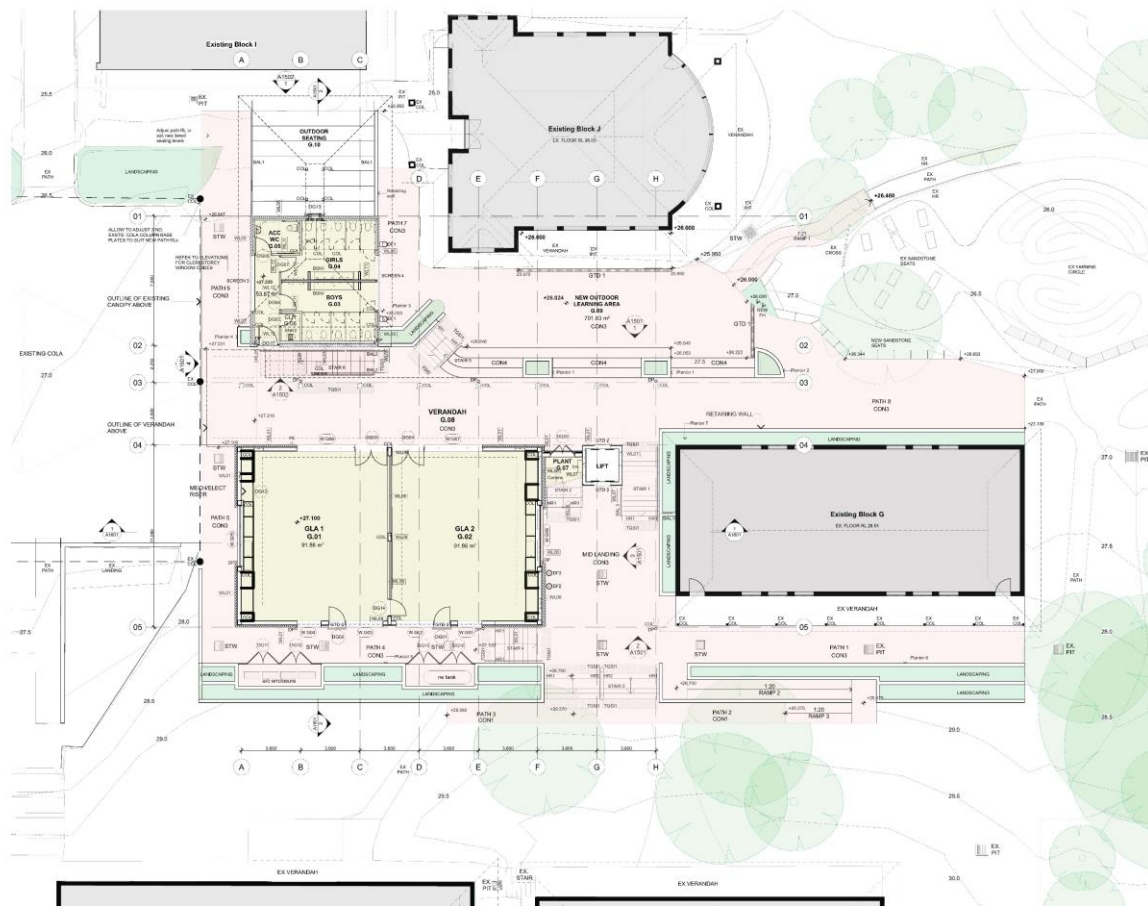
Location: 2 Hicks Lane, Tumby Umbi, NSW 2261



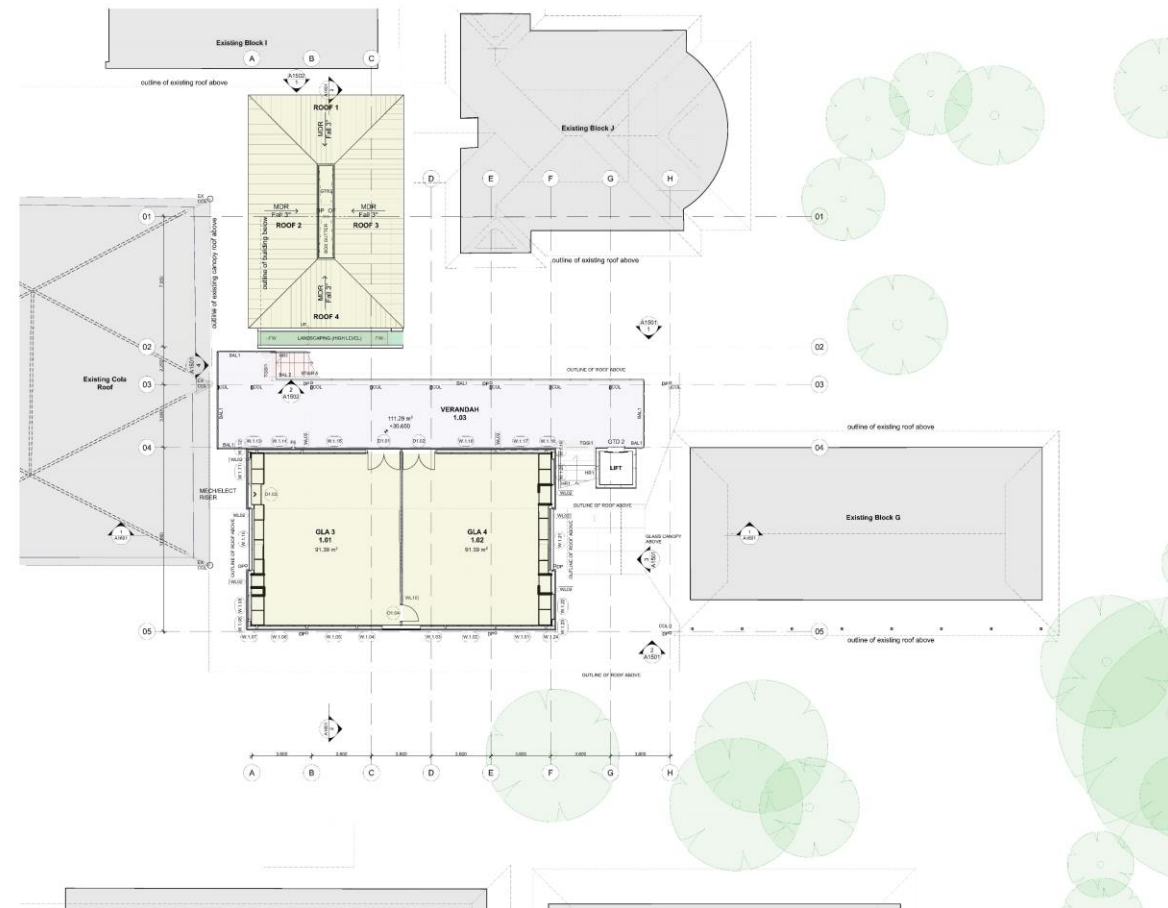
Property Development Data		Building Details	
Address	2 Hicks Lane, Tumby Umbi, NSW, 2261	Type of Construction	Type B
Lot & DP	DP 749854	Rise in Storey	2
Local Council	Central Coast Council	Corrosivity Category	C3 Coastal
Site Area	29,051m²		
NCC Classifications	2022		
Classifications	9b		



Site Plan



Ground Floor Plan



Level 1 Floor Plan



North Elevation



North Elevation- Amenities



South Elevation



South Perspective



West Perspective



South Elevation- Amenities



East Elevation



West Elevation